

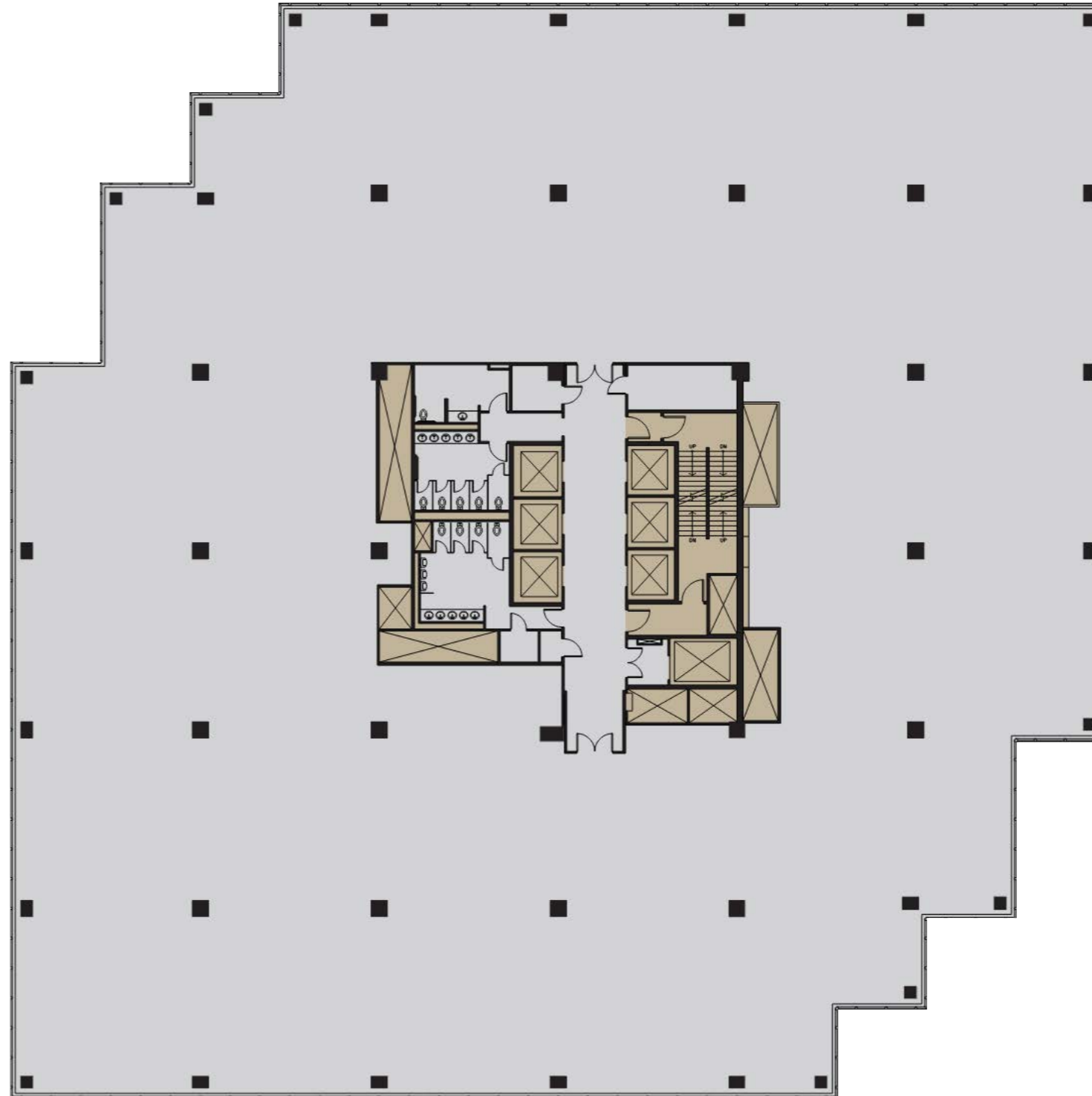
FLOORS 16 - 19

**33,400 SF**

TOWER FLOORS  
CORE & SHELL

**Betsy Buckley**  
(203) 705 2227  
betsy.buckley@jll.com

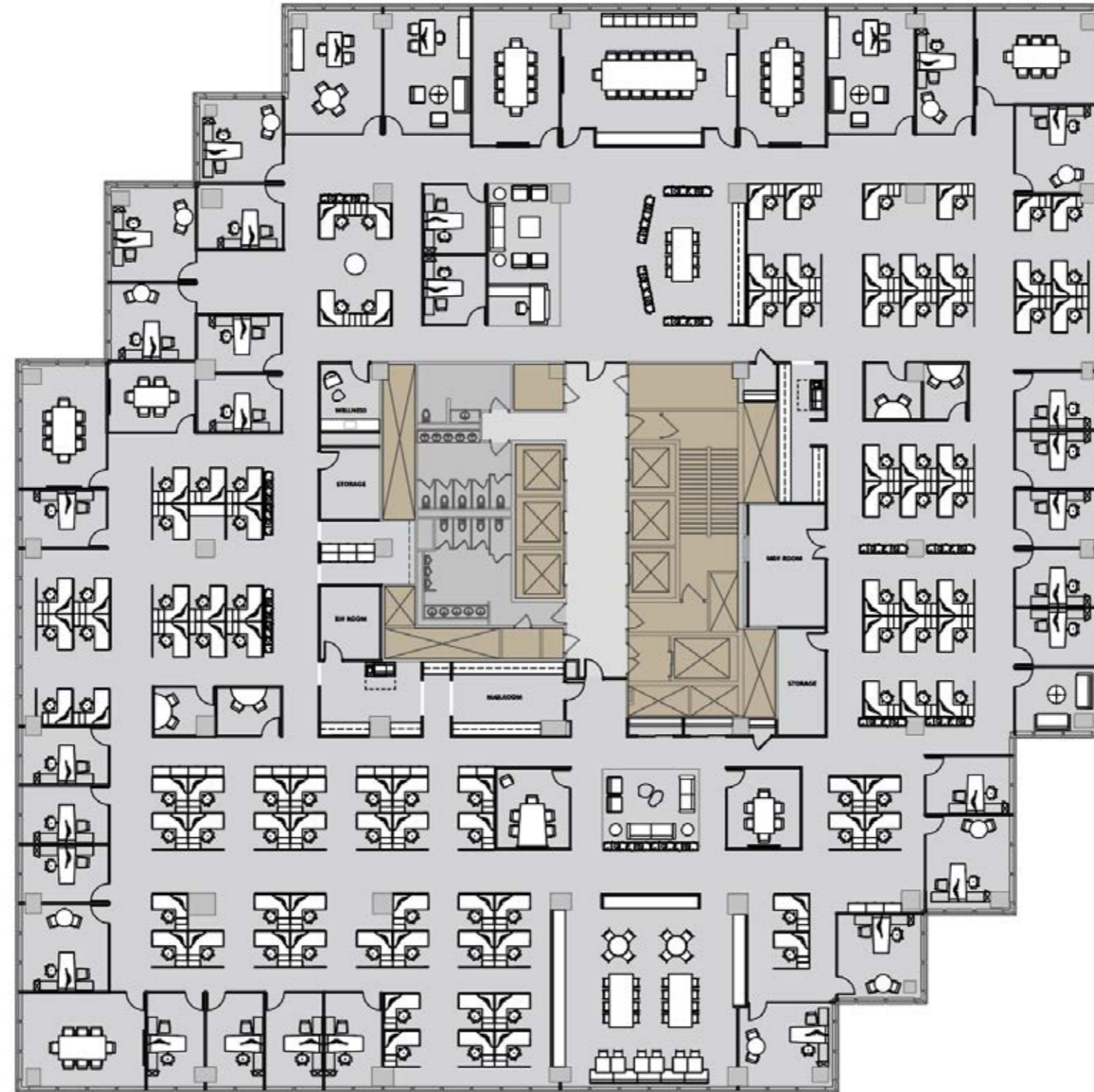
**Al Gutierrez**  
(914) 419 3446  
al.gutierrez@jll.com



FLOORS 16 - 19

**33,400 SF**

TRADITIONAL  
LAYOUT



**WORKPLACE LEGEND**

- 03 EXECUTIVE OFFICES (LARGE)
- 08 V.P. OFFICES (MEDIUM)
- 16 STANDARD OFFICES (SMALL)
- 05 VISITOR OFFICES (INTERIOR)
  
- 32 TOTAL NUMBER OF PRIVATE OFFICES
  
- 96 6X6 WORKSTATIONS
- 01 RECEPTION
  
- 129 TOTAL NUMBER OF WORK-POINTS

**MEETING SPACES**

- 01 BOARDROOM (24 PERSON)
- 02 CONFERENCE ROOMS (10 PERSON)
- 03 CONFERENCE ROOMS (08 PERSON)
- 03 CONFERENCE ROOMS (06 PERSON)
- 04 ZOOM ROOM (02 PERSON)
  
- 13 NUMBER OF MEETING SPACES
- 94 NUMBER OF MEETING SEATS
  
- 0.72 TO 1 RATIO OF MEETING SEATS TO WORK-POINTS

**AMENITIES**

- 01 LARGE CAFE/ PANTRY
- 01 SATELLITE PANTRY/ BREAK-OUT
- 01 WELLNESS ROOM
- 01 COLLABORATIVE SALON

**SUPPORT SPACES**

- 01 MDF
- 01 IDF
- 02 COPY AREAS
- 01 MAIL ROOM
- 03 STORAGE SPACES & FILE AREA
- 04 CLOSETS

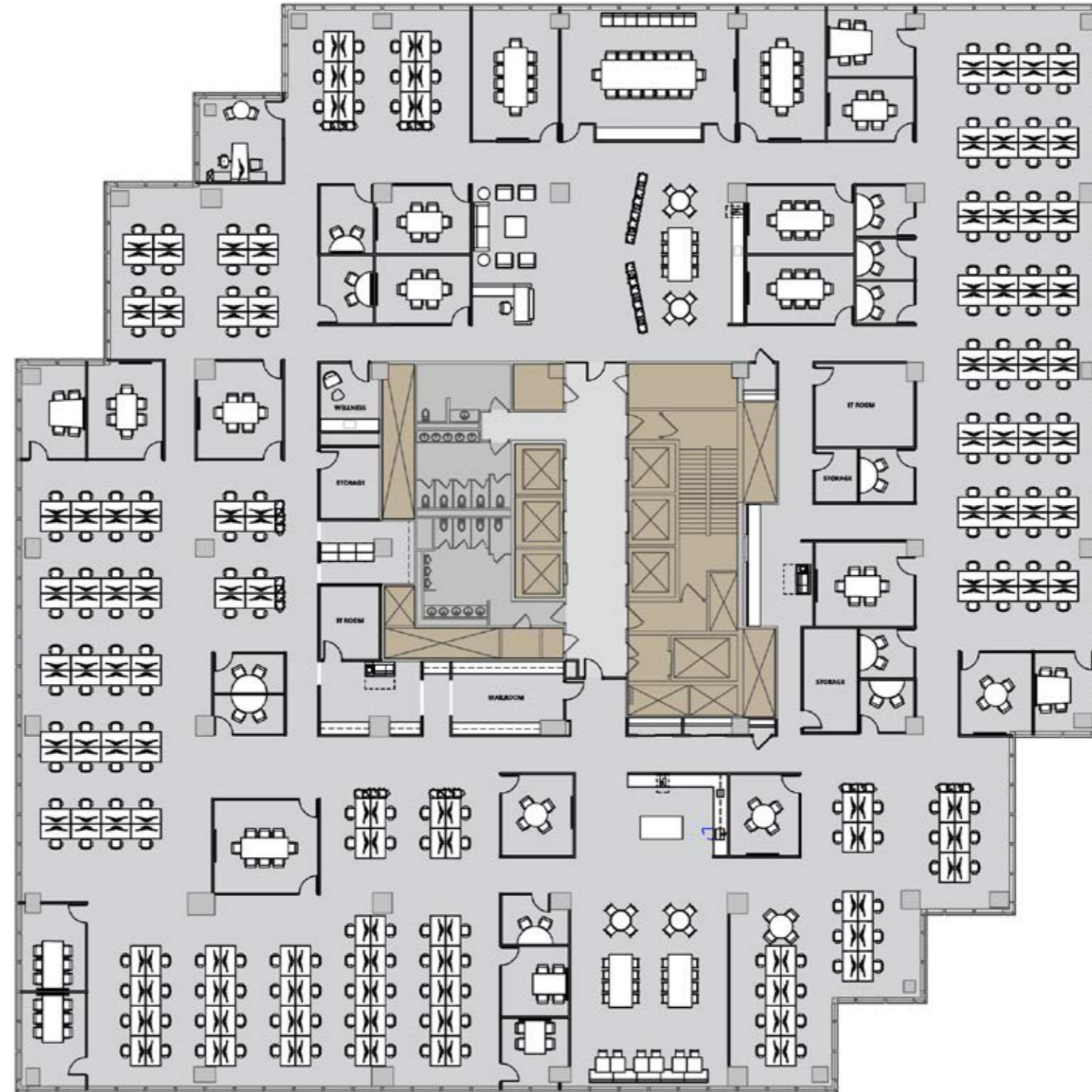
**Betsy Buckley**  
(203) 705 2227  
betsy.buckley@jll.com

**Al Gutierrez**  
(914) 419 3446  
al.gutierrez@jll.com

FLOORS 16 - 19

**33,400 SF**

OPEN  
LAYOUT



**WORKPLACE LEGEND**

- 01 EXECUTIVE OFFICES
- 07 FLEX SPACES
- 01 RECEPTION
- 216 5' BENCHING STYLE WORKSTATIONS
- 225 TOTAL NUMBER OF WORK-POINTS

**MEETING SPACES**

- 01 BOARDROOM (24 PERSON)
- 02 CONFERENCE ROOMS (10 PERSON)
- 03 CONFERENCE ROOMS (08 PERSON)
- 06 CONFERENCE ROOMS (06 PERSON)
- 08 ZOOM ROOM (02 PERSON)

- 25 NUMBER OF MEETING SPACES
- 134 NUMBER OF MEETING SEATS

0.6 TO 1 RATIO OF MEETING SEATS TO WORK-POINTS

**AMENITIES**

- 01 LARGE CAFE/ PANTRY
- 01 SATELLITE PANTRY/ BREAK-OUT
- 01 WELLNESS ROOM

**SUPPORT SPACES**

- 01 MDF
- 01 IDF
- 02 COPY AREAS
- 01 MAIL ROOM
- 03 STORAGE SPACES
- 04 CLOSETS

**Betsy Buckley**  
(203) 705 2227  
betsy.buckley@jll.com

**Al Gutierrez**  
(914) 419 3446  
al.gutierrez@jll.com